

International Golfing Fellowship  
of Rotarians Inc

Rotary  
Club of Darwin

# 48<sup>th</sup> Annual Golf Tournament

10-15 May 2026

SUPPORTING

Rotary  
Districts of Australia



**Australian Rotary Health**

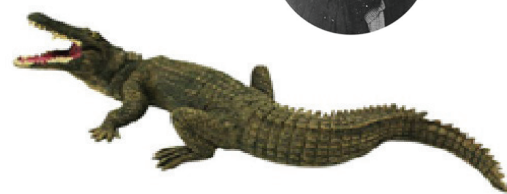
WE FUND HEALTH RESEARCH



Darwin Golf Club, Darwin NT



International Golfing  
Fellowship of Rotarians  
AUSTRALIA





# Welcome to Darwin, Northern Territory

**What we have to offer** – Darwin, or the Top End as we fondly refer to it, is Australia's gateway to Southeast Asia and the world beyond. Our lifestyle infuses the rich tapestry of these vital Asian influences with the rough and tumble Australian psyche and our precious indigenous culture. You'll experience the best of all worlds when you visit us and feel at ease being here. Why not check out Top End Tourism (<https://www.tourismtopend.com.au/>) for a more personal approach.



**The Dry Season** – So, it'll really be starting to get cold in Southern Australia, but up here, the weather couldn't be more perfect! You'll experience warm dry weather with a guarantee of no rain! Regardless of where you travel from, we know you'll be comfortable.

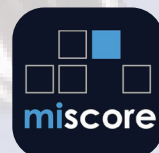
**Travel & Accommodation** – Travel to Darwin from within Australia at this time of the year can be tricky as everyone down South wants to be here too. Best to book flights and accommodation as early as possible and you'll likely get a better deal. Even our caravan parks fill up quickly. For our overseas travellers, Darwin International Airport is a major gateway to Australia for international flights, offering easy access to and from Europe, America and Asia with many flights coming direct from Singapore.



**The Golf Course** – Darwin Golf Club is the premier course in the Top End and the perfect venue for you to play 18 holes. It's relatively flat and open and will challenge you as a good course should. With over 2000 trees removed and a brand new irrigation system just installed, you'll barely recognise it if you've played here previously.

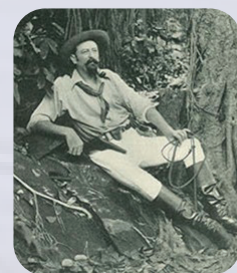
**Golf Carts** – Unfortunately, we don't have a heap of these, so first in – best dressed we're afraid. We'll do our best to beg, borrow and steal what we can from the locals to bolster the golf club's numbers, but you may be required to walk. We promise we'll do our best to look after you.

**MiScore** – Darwin Golf Club uses the 'MiScore' application for scoring competitions. We strongly recommend you purchase and download the application from Play Store or similar to make your scoring simple. If you can't, for any reason, we can still use manual cards, but we're keen to avoid this if possible.

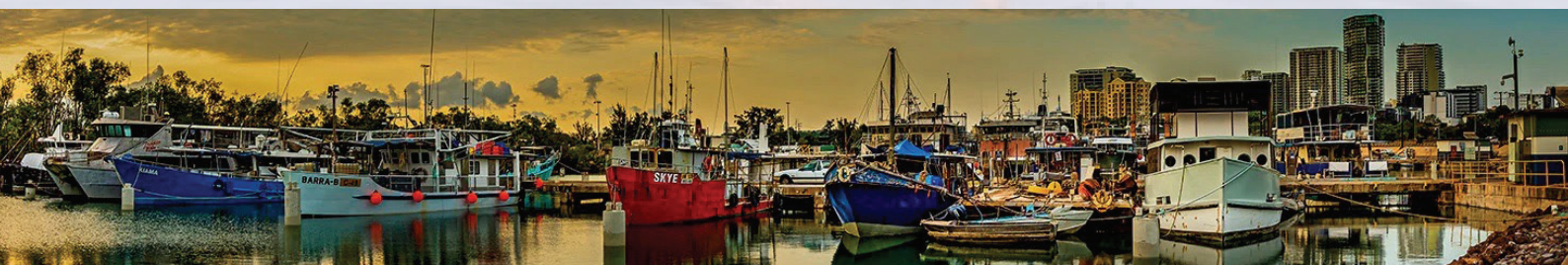


**Partner's Program** – It won't be too onerous and you won't be travelling far and wide, but we will do our best to keep you interested and engaged. So, if you are the non-playing partner of one of the golfers, then consider joining our Partner's Program and sample what the Northern Territory has to offer. We intend exploring our heritage, culture, history and way of life. We'll let you know when the program is available.

**Tournament Theme** – Darwin prides itself on having a theme to our tournaments. Previous IGFR participants experienced our historic gaol in 2005 and in 2012, we visited East Point Military Museum, put you through your paces on the drill square and fed you a military meal highlighted by an amazing historic military flyover. What will we do in 2026? Well, I guess you'll just have to wait and see. Maybe pack an old pair of denim trousers and a check flannel shirt (outback theme) for the Make Up Dinner.



**Visit our website for registration, news and updates:** <https://igfr-australia.org/>





# Tournament Program

## IGFR Australia – Darwin, NT

### SUNDAY

10 May 2026

**Registration** 2pm – 5.30pm  
Darwin Golf Club, Bar Facilities Available

**IGFR Delegates Meeting** 3pm  
Meet at Darwin Golf Club, Location TBC

**Welcome BBQ** 5.30pm – 7pm  
Darwin Golf Club



### MONDAY

11 May 2026

**First Round** 8am Tee Off

**Non-Golfer's Program** Depart DGC 8.30am  
Location TBC Return 2.30pm

**IGFR AGM** 2.30pm Start DGC

**Reception** 6pm for 6.30pm Start  
Government House



### TUESDAY

12 May 2026

**Second Round** 8am Tee Off

**Non-Golfer's Program** Depart DGC 8.30am  
Location TBC Return 2.30pm

**Rotary Make Up Dinner** 6pm for 6.30pm Start  
Darwin Golf Club – Dress: 'Western'



### WEDNESDAY

13 May 2026

**Free Day**  
**Tour options include:**

- Tiwi Islands
- Litchfield National Park

Available at participant's cost  
Book through Tourism Top End



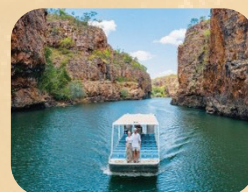
### THURSDAY

14 May 2026

**Third Round** 8am Tee Off

**Non-Golfer's Program** Depart DGC 8.30am  
Location TBC Return 2.30pm

**Free Night**  
Why not visit the famous  
Mindil Beach Markets



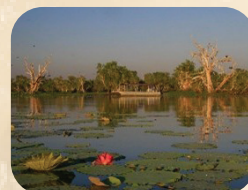
### FRIDAY

15 May 2026

**Final Round** 8am Tee Off

**Non-Golfer's Program** Depart DGC 8.30am  
Location TBC Return 2.30pm

**Presentation Dinner** 7pm for 7.30pm  
Darwin Golf Club



## 48TH ANNUAL GOLF TOURNAMENT

Supporting Australian Rotary Health, specifically: Children's Mental Health and Remote Nursing in the Northern Territory

Registration details available online: <https://igfr-australia.org/>

# Further Information

## TOURNAMENT CONTACTS

### Tournament Director

Paul Simon 0417 270 121

### Match & Course Director

Dave Kingston 0409 448 157

### Finance Director

Bob Cowling 0418 811 901

### Tour & Function Director

Robyn Simon 0400 101 531

## REGISTRATION FEES

### Rotarian Golfers \$550

Welcome BBQ, Green Fees & Lunch (4 days) and Presentation Dinner

### Guest Golfers \$475

Welcome BBQ, Green Fees & Lunch (3 days) and Presentation Dinner

### Non Golfers with Tours \$500

Welcome BBQ, Tours and Presentation Dinner

### Non Golfers \$100

Welcome BBQ and Presentation Dinner Only

### Friday Tour \$100

### Golf Cart (4 days) \$100

### Golf Cart (3 days) \$75

### Push Buggy N/C

### IGFR Membership \$25

### Tournament Shirt \$50

### Make Up Dinner \$50

Register online at:

<https://igfr-australia.org>

## QUALIFICATIONS

In order to participate in an International Golfing Fellowship of Rotarians Australia Tournament, an entrant shall be a member of a Rotary Club and pay the IGFR Australia Annual Subscription

A person who accompanies a Rotarian or former members of the IGFR may compete for the Guest Trophies

Rotarians who have an official Golf Australia (GA) or World Handicap System (WHS) Handicap may compete for all Rotary Trophies

Rotarians, sponsors or other supporters of the Tournament who may not be members of a recognised golf club but invited to play (at the discretion of the Tournament Committee) will be incorporated in a separate concurrent event and will not be eligible for any Rotary Trophies.

## DIVISIONS

Individual entries will only be accepted from Rotarians and Guests who are financial members of an affiliated Golf Club. Eligibility to compete is dependent on the Tournament Match Committee being able to verify participant handicaps on the GA Handicap System.

Rotarians with a WHS Handicap will be required to evidence their Handicap separately to the Tournament Match Committee.

### Division 1 Rotarian golfer

Handicap 0-15

### Division 2 Rotarian Golfer

Handicap 16-23

### Division 3 Rotarian Golfer

Handicap: Men 24-36

Handicap: Women 24-45

### Division 4 Guests only

Handicap: Men 0-36

Handicap: Women 0-45

The Tournament Match Committee may adjust these divisions in order to best balance them across the player field. Best efforts will be made to ensure a minimum of 12 entries in each Division

## TEAM EVENTS

Teams will be selected as follows:

All entrants will be listed in order of receipts and midpoint of handicaps determined. Participants will be paired – one from the upper half and one from the lower half. Where feasible, pairings will be from different states, different Rotary Districts or different Rotary Clubs in that order

All entrants will be drawn in the Teams Events. If there are an odd number of entries, the last entrant will be paired with the first entrant received from the other half of the draw and from a different state. Competitors from outside Australia will be included and randomly allocated to one of the participating Australian States or Territories

## TROPHIES

### Sir Clem Renouf

Rotarian Team with the highest Aggregate Stableford score

### Victorian

Rotarian Team with the second highest Aggregate Stableford score

### Royce Abbey

Highest Individual Aggregate Stableford score and the title IGFR Champion with Handicap

### West Australia

Rotarian with the highest individual Aggregate Stableford score and the title IGFR Champion without Handicap

### South Australia

Division 1 player with the highest Individual Aggregate Stableford score

### Tasmania

Division 2 player with the highest Individual Aggregate Stableford score

### Northern Territory

Division 3 player with the highest Individual Aggregate Stableford score

### Glen Kinross

Player aged 65 years before the first day of the Tournament up to 74 years of age with the highest Individual Aggregate Stableford score

### Ian Risley

Player aged 75 years and over before the first day of the Tournament with the highest Individual Aggregate Stableford score

### Queensland

Division 1 player with the second highest Individual Aggregate Stableford score

### New South Wales

Division 2 player with the second highest Individual Aggregate Stableford score

### Australian Capital Territory

Division 3 player with the second highest Individual Aggregate Stableford score

### Guest Trophies

Individual winner and runner up  
Team winner and runner up

### Daily Awards

First and second in each Division

### Sandgropers Trophy

The State or Territory which has the highest total of points at the end of the Tournament calculated from the best two Rotarian scores on a daily basis

